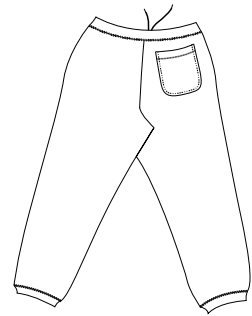


Sweatpant

Sport-Tek
By Port Authority®



Front



Back

F257

- * 9-ounce * 60/40 ring spun combed cotton/poly * 2 front pockets * 1 back pocket
- * Contrast inside waistband * Drawcord * Rib knit (relaxed) waistband and cuffs

Care Instructions:





Machine wash cold. Wash with like colors.
Do not bleach. Tumble dry low.
Warm iron if necessary.

Finished Measurements in Inches

Size	XS	S	M	L	XL	2XL	3XL	4XL
Waistband	27	29	31	33	35	37	39	43
Inseam	29	30	31	32	33	34	30	32
Cuff	5.25	5.75	6.25	6.75	7.25	7.75	8.25	8.75
Pocket	7	7	7	7	7	7	8	8

Waistband width measured relaxed. Cuf width measured relaxed. Pocket opening measured from bartack to bartack.

Colors

	Athletic Heather
	Black
	Navy
	Brown

Please Note:

Colors shown are approximate and for reference only. For closest match see PMS colors, or for exact match, returnable samples and grommeted samples are available.

Color Chart

Colors	Athletic Heather	Black	Navy	Brown
Textile PMS	No Match	19-4203TC	19-4010TC	19-1213 TC
General PMS	No Match	Process Black	532C	7519 C